



# CONECTOR MACHO RETO PRENSA CABO RG-11 e RGC-11

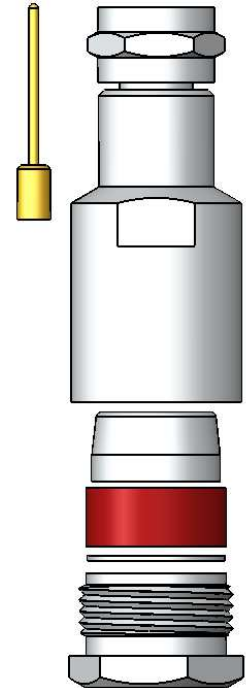
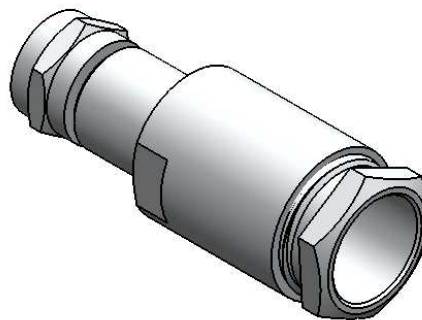
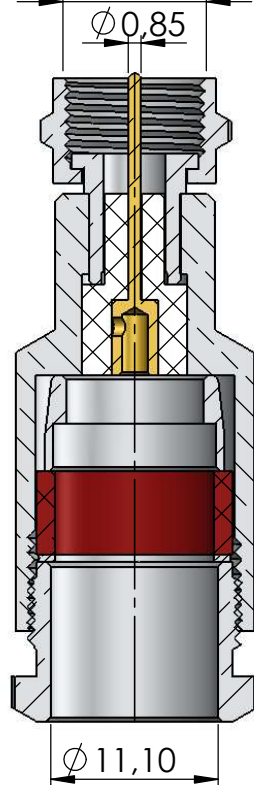
CÓDIGO: AC-6M

SÉRIE: ANTENA COLETIVA

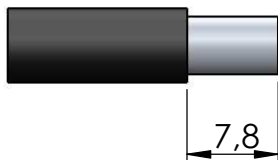
NORMA: IEC 169-U

PESO DO CONECTOR: 26,54g

Rosca 3/8" x 32 Fios



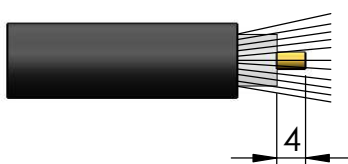
## Instruções montagem do cabo no conector



1) Cortar a capa de vinil expondo a malha 12,7mm.



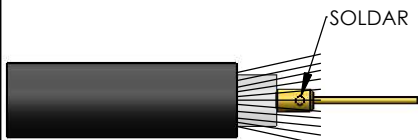
4) Fechar a malha e introduzir no cabo o redutor, arruela, anel de vedação e a bucha encostando na capa de vinil.



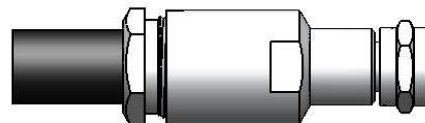
2) Abrir a malha e cortar o dielétrico expondo o condutor central 4,0mm.



5) Dobrar a malha sobre a bucha e apará-la.



3) Soldar o condutor do cabo no pino.



6) Introduzir o cabo com os componentes no conector e apertá-lo usando chaves apropriadas.