



CONECTOR FÊMEA RETO CRIMPAGEM CABO RG-58

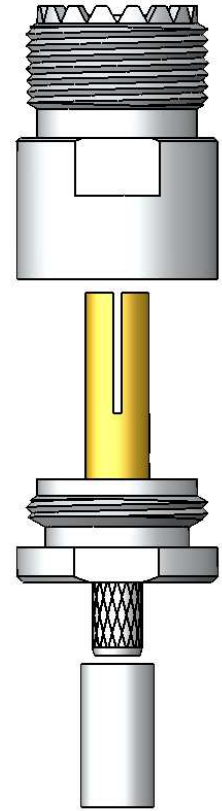
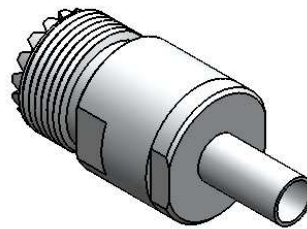
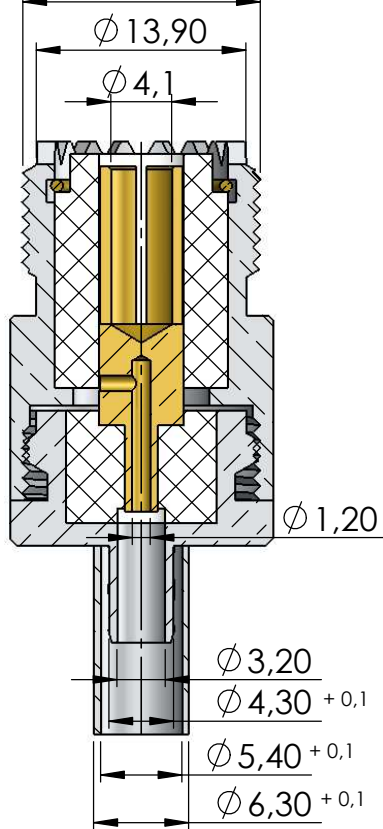
CÓDIGO: KF-15

SÉRIE: UHF

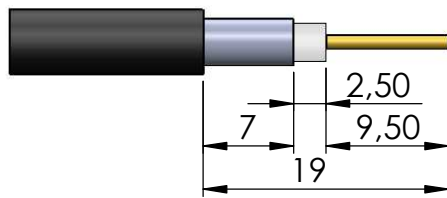
NORMA: IEC 169-12

PESO DO CONECTOR: 32,06g

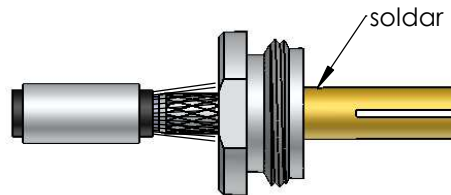
Rosca 5/8" x 24 Fios



Instruções montagem do cabo no conector



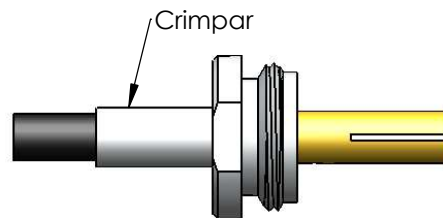
1) Corte do cabo.



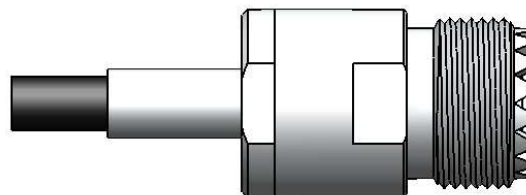
3) Introduzir o condutor do cabo no pino, e soldar. Colocando a malha sobre a parte recartilhada do redutor.



2) Introduzir a bucha no cabo.



4) Colocar a bucha até encostar no redutor e crimpá-la.



5) Introduzir o cabo no corpo do conector.