



CONECTOR FÊMEA RETO PRENSA CABO RG-213

CÓDIGO: KF-7

SÉRIE: UHF

NORMA: IEC 169-12

PESO DO CONECTOR: 39,29g

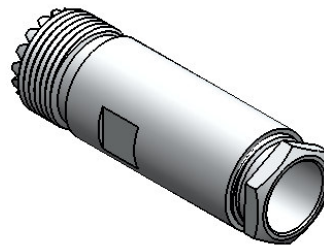
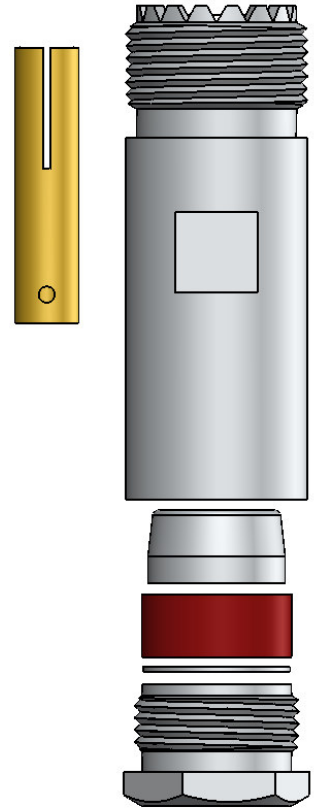
Rosca 5/8" x 24 Fios

$\varnothing 13,90$

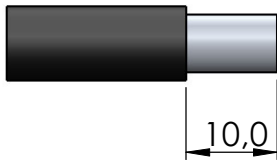
$\varnothing 4,1$

$\varnothing 2,90 + 0,05$

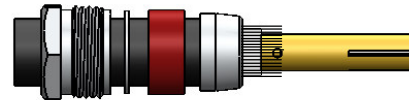
$\varnothing 11,10$



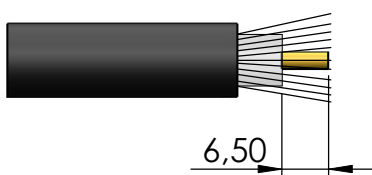
Instruções montagem do cabo no conector



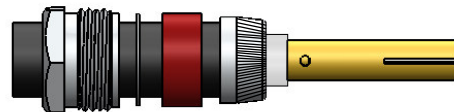
1) Cortar a capa de vinil expondo a malha 12,7mm.



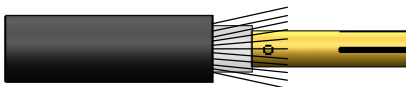
4) Fechar a malha e introduzir no cabo o redutor, arruela, anel de vedação e a bucha sobre a malha encostando na capa de vinil.



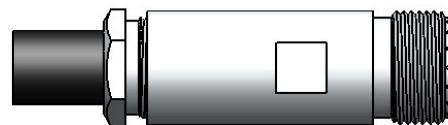
2) Abrir a malha e cortar o dielétrico expondo o condutor central 6,5mm.



5) Dobrar a malha sobre a bucha e apará-la.



3) Soldar o condutor do cabo no pino.



6) Introduzir o cabo com os componentes no conector e apertá-lo usando chaves apropriadas.