



CONECTOR MACHO RETO PRENSA CABO RG/RGC - 58

CÓDIGO: KM-3M

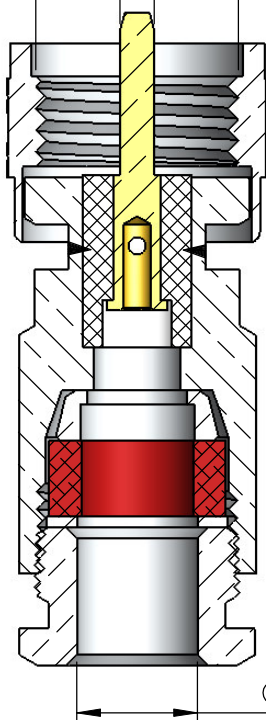
SÉRIE: UHF MINI

NORMA:

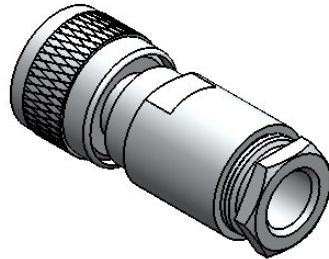
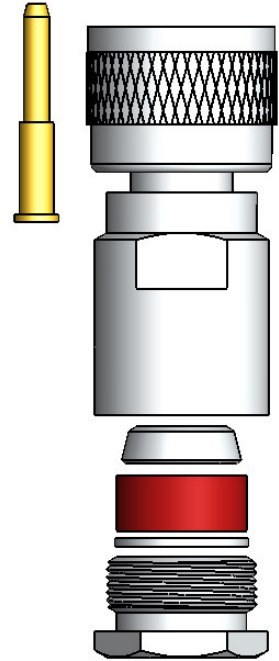
PESO DO CONECTOR: 13,22g

Rosca 3/8" x 24 Fios

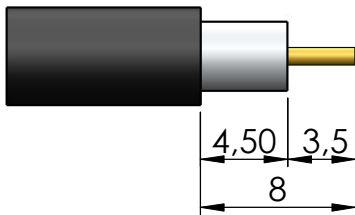
$\phi 1,59 \pm 0,01$



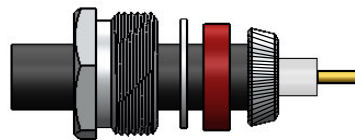
$\phi 5,60$



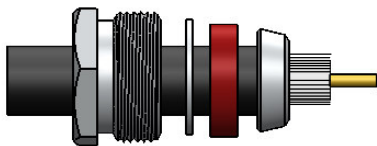
Instruções montagem do cabo no conector



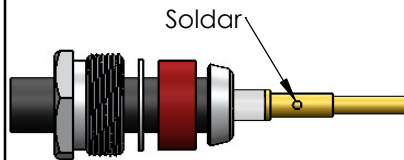
1) Corte do cabo.



3) Dobrar a blindagem para traz e apará-la.

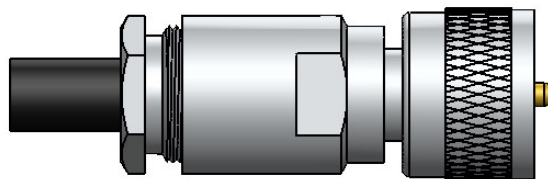


2) Introduzir o redutor, arruela, arruela neoprene e bucha cônica.



Soldar

4) Introduzir o pino no condutor central, encostá-lo no dielétrico e soldar. Evitar excesso de calor para não deformar o dielétrico.



5) Introduzir o cabo no conector e apertar com chaves apropriadas.