



# CONECTOR MACHO RETO PARA CRIMPAGEM CABO RG-174

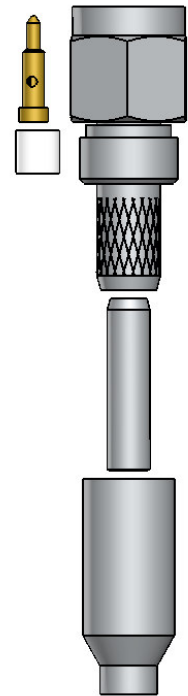
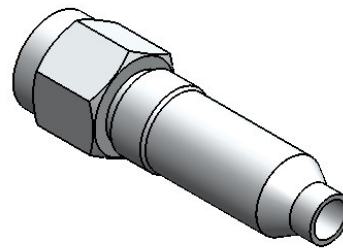
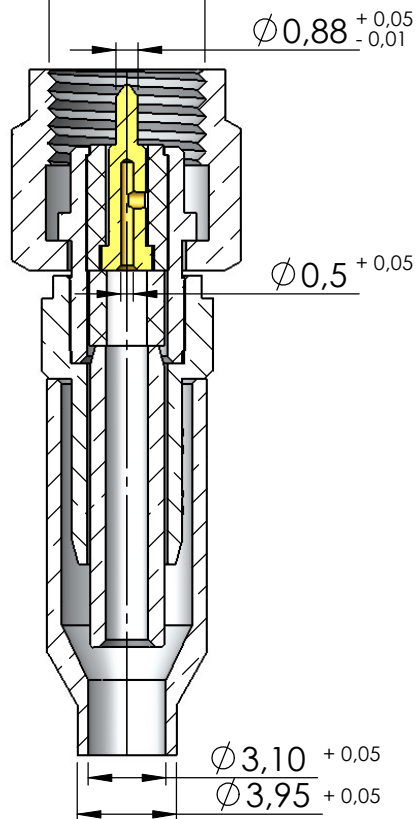
CÓDIGO: 3169

SÉRIE: SMA 50 OHMS

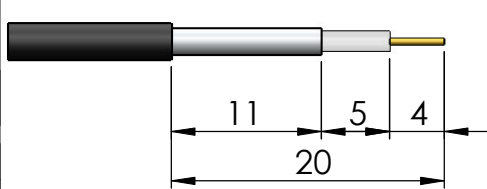
NORMA: IEC 169-15

PESO DO CONECTOR: 5,40g

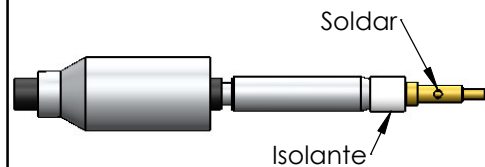
Rosca 1/4" x 36 F.P.P



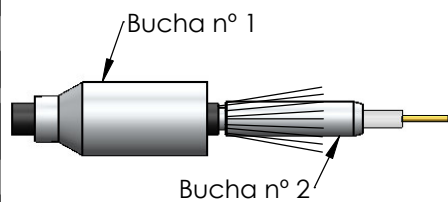
## Instruções montagem do cabo no conector



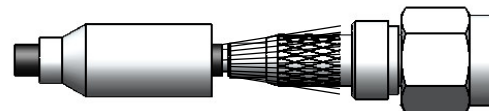
1) Corte do cabo.



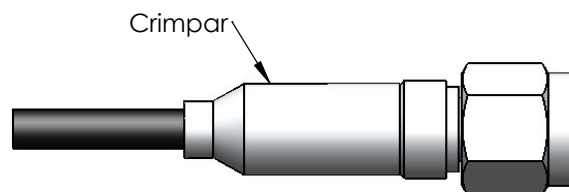
3) Introduzir o isolante sobre o dielétrico. Soldar o condutor central no pino.



2) Introduzir a bucha nº 1 no cabo, abrir a malha e introduzir a bucha nº 2.



4) Introduzir o pino soldado no conector colocando a malha sobre a parte recartilhada do conector.



5) Colocar a bucha sobre a malha até encostar no conector e crimpá-la.