



CONECTOR MACHO RETO PRENSA CABO PINO FIXO CABO RGC-213

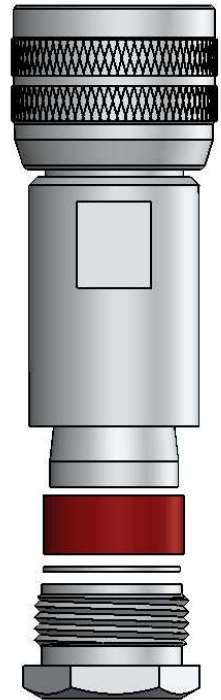
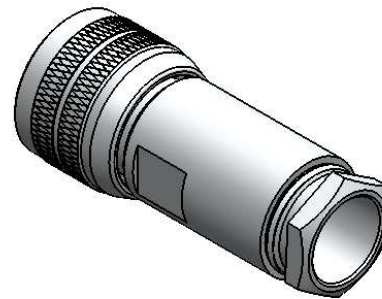
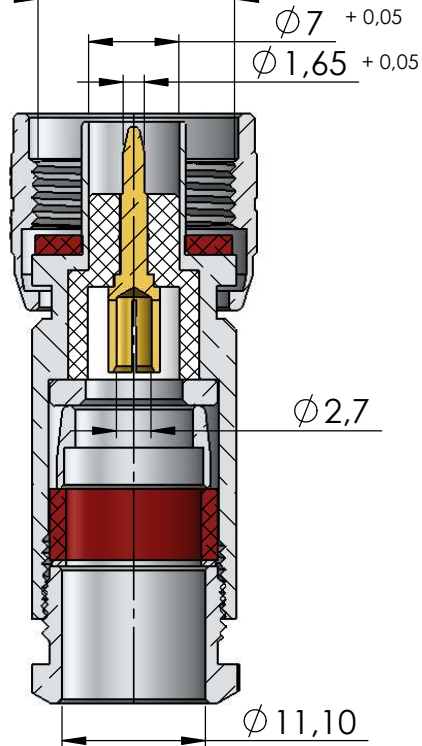
CÓDIGO: CM-87

SÉRIE: N 50 OHMS

NORMA: IEC 169-16

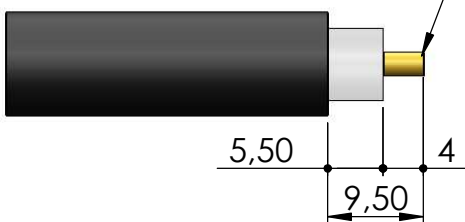
PESO DO CONECTOR: 36,64g

Rosca 5/8" x 24 Fios

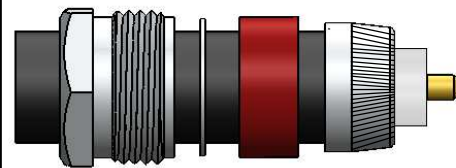


Instruções montagem do cabo no conector

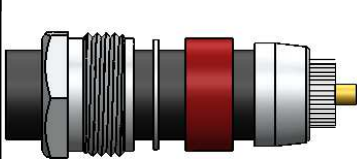
Com o auxílio de uma lima quebrar canto



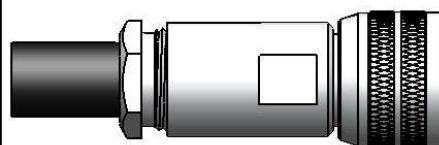
1) Corte do cabo.



3) Dobrar a malha sobre a bucha e apará-la.



3) Fechar a malha e introduzir no cabo o redutor, arruela, anel de vedação e a bucha sobre a malha encostando na capa de vinil.



4) Introduzir o cabo no conector e apertá-lo usando chaves apropriadas.