



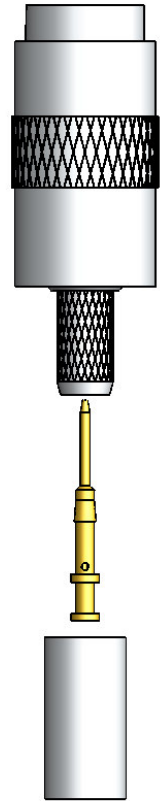
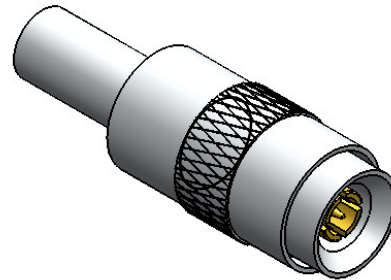
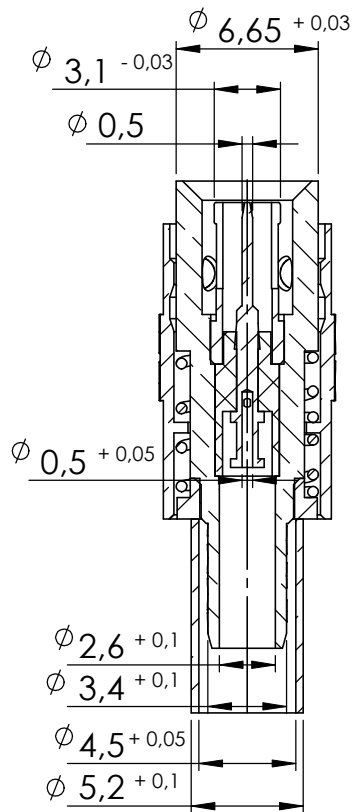
CONECTOR MACHO RETO CRIMPAGEM CABO RF-75 0,4/2,5DT

CÓDIGO: 13027

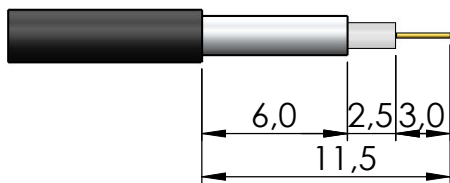
SÉRIE: 1.0/2.3

NORMA: DIN 47297

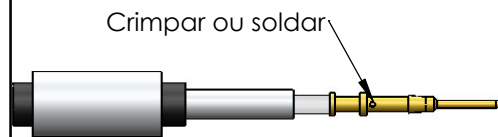
PESO DO CONECTOR: 4,90g



Instruções montagem do cabo no conector

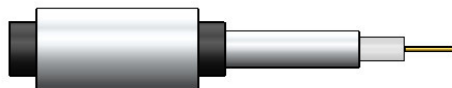


1) Corte do cabo.

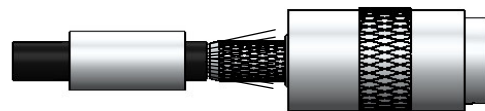


Crimpar ou soldar

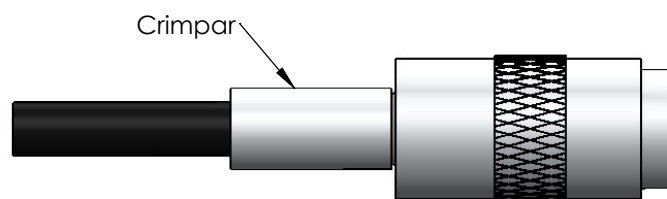
3) Crimpar ou soldar o condutor central no pino.



2) Introduzir a bucha no cabo.



4) Introduzir o pino soldado no conector colocando a malha sobre a parte recartilhada do conector.



Crimpar

5) Colocar a bucha sobre a malha até encostar no conector e crimpá-la.