



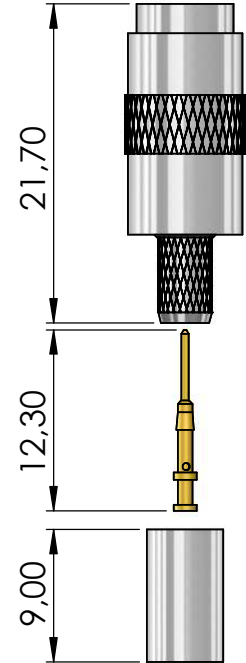
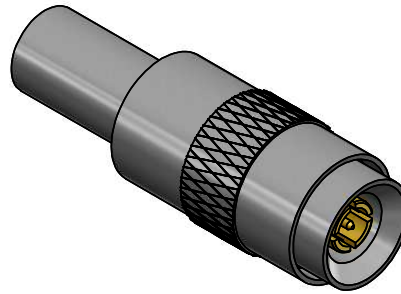
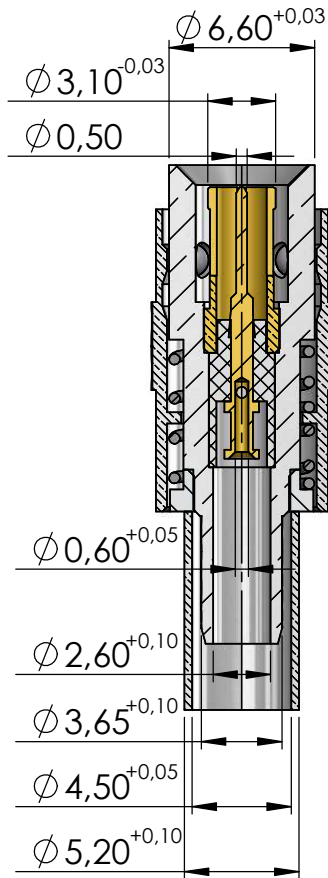
CONECTOR MACHO RETO CRIMPAGEM CABO RF-75 0,4/2,5 E BELDEN 1855-A

CÓDIGO: 13026

SÉRIE: 1.0/2.3

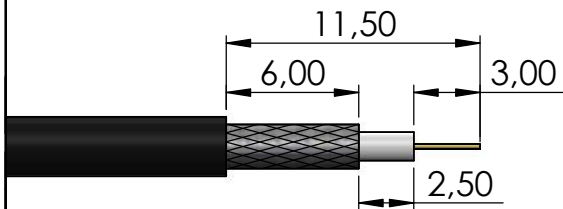
NORMA: DIN 47297

PESO DO CONECTOR: 4,87g

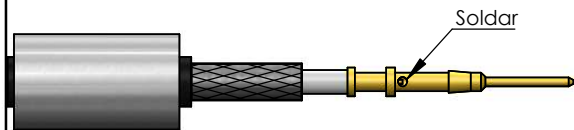


Instruções montagem do cabo no conector

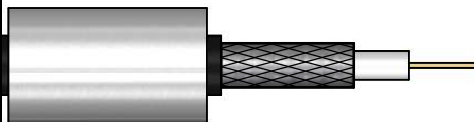
1. Corte do cabo.



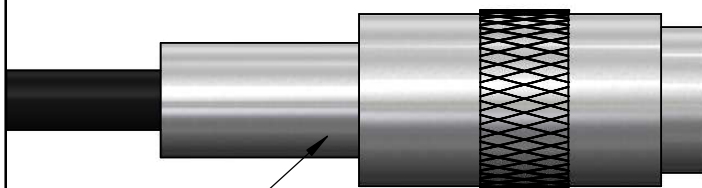
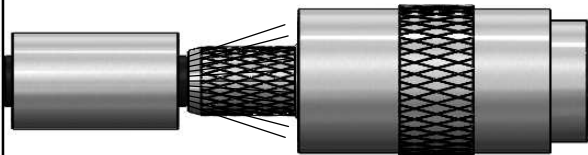
3. Soldar o condutor central no pino.



2. Introduzir a bucha no cabo.



4. Introduzir o pino soldado no conector colocando a malha sobre a parte recartilhada do conector.



Crimpar Hex. 0,178"

5) Colocar a bucha sobre a malha até encostar no conector e crimpá-la, utilizando hexágono de 0,178".