



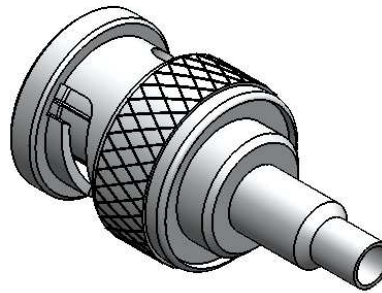
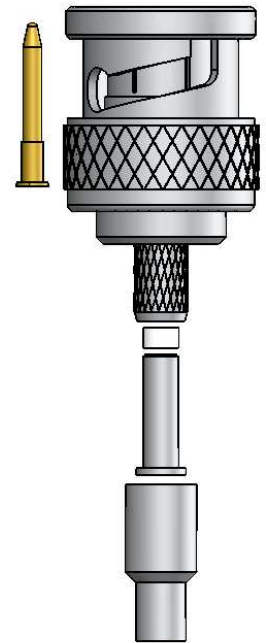
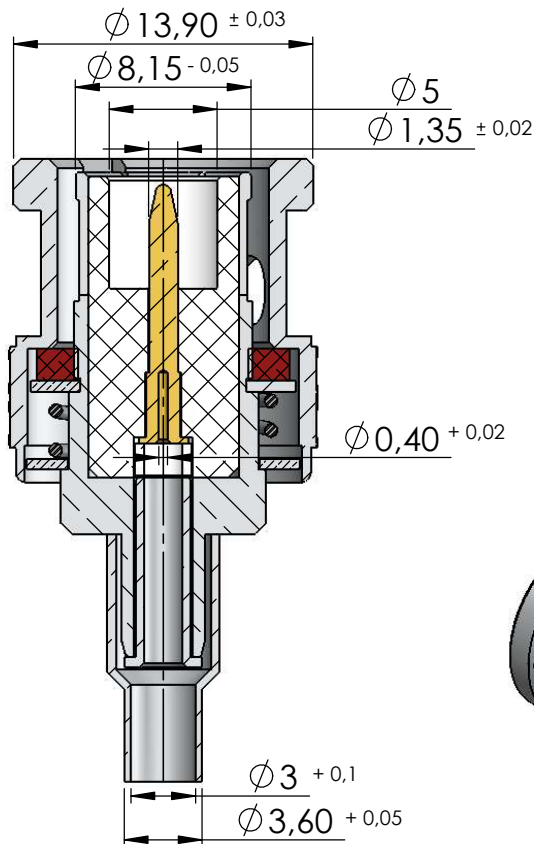
# CONECTOR MACHO RETO CRIMPAGEM CABO RG-174 e RG-179

CÓDIGO: LM- 82

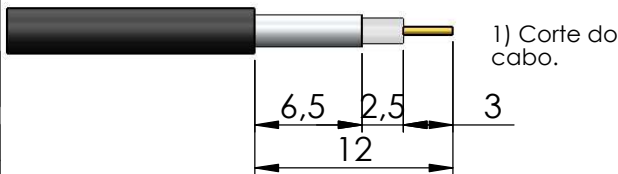
SÉRIE: BNC 50 OHMS

NORMA: IEC 169-8

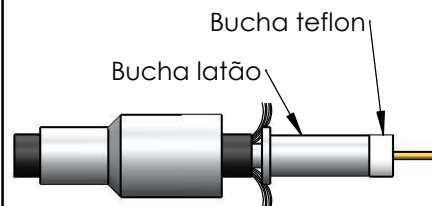
PESO DO CONECTOR: 9,95g



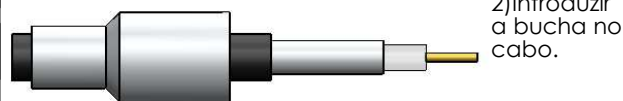
## Instruções montagem do cabo no conector



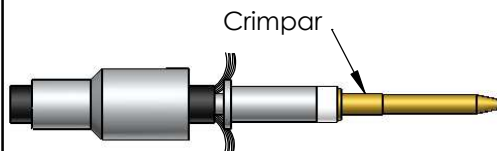
1) Corte do cabo.



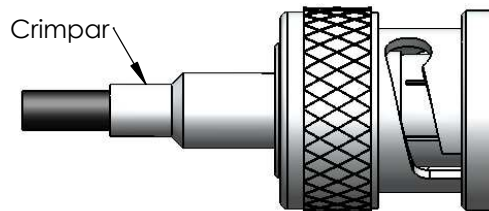
3) Abrir a malha, colocar a bucha de latão sobre o dielétrico e a bucha de teflon até encostar na bucha de latão.



2) Introduzir a bucha no cabo.



4) Crimpar o pino no condutor do cabo.



5) Introduzir o pino crimpado no cabo do conector até encostar no teflon, colocar a bucha sobre a malha e crimpá-la.