



CONECTOR MACHO ANGULAR PRENSA CABO LMR-300 e RGC-5

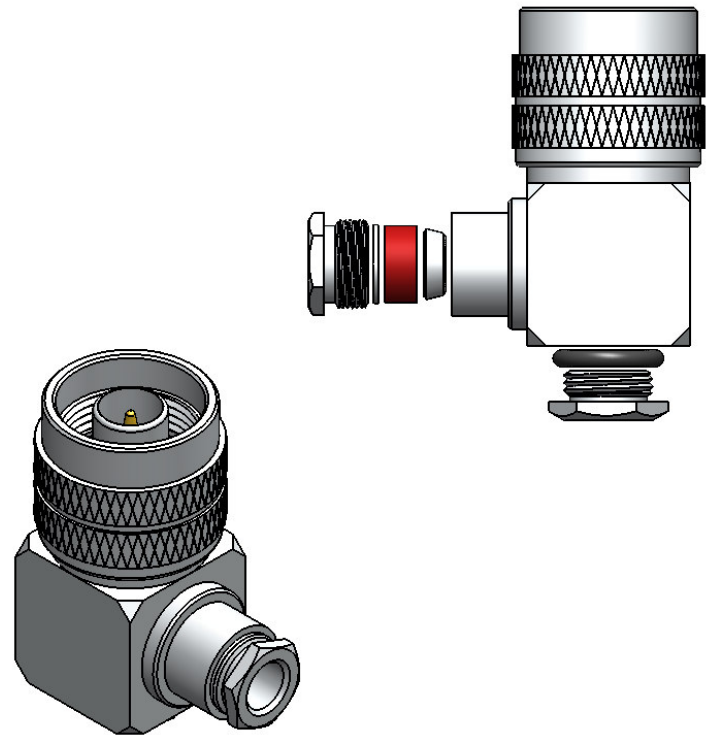
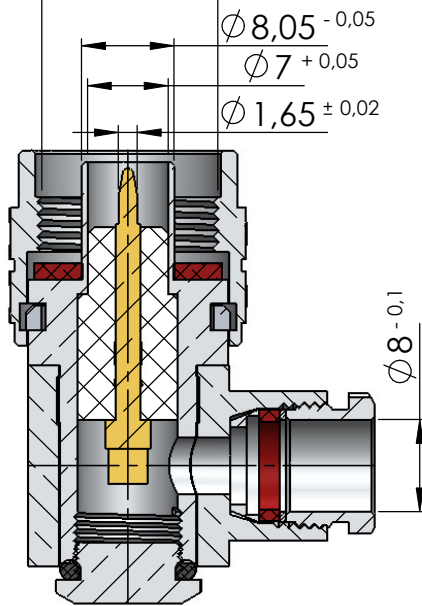
CÓDIGO: CM-62

SÉRIE: N 50 OHMS

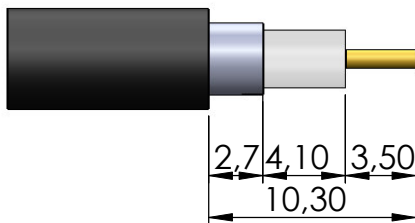
NORMA: IEC 169-16

PESO DO CONECTOR: 73,88g

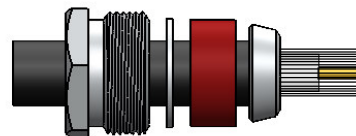
Rosca 5/8" x 24 Fios



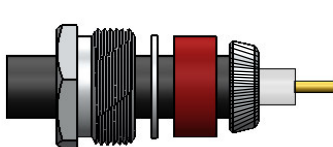
Instruções montagem do cabo no conector



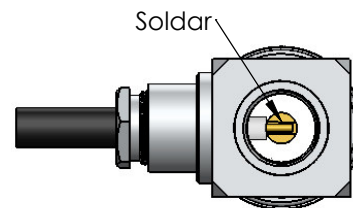
1) Corte do cabo.



3) Dobrar a malha sobre a bucha e apará-la.

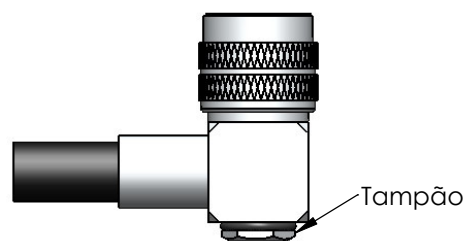


2) Fechar a malha e introduzir no cabo o redutor, arruela, anel de vedação e a bucha sobre a malha encostando na capa de vinil.



Soldar

4) Empure o conector no abo até que o condutor do cabo fique sobre o fresado do contato do conector. Soldar o condutor.



5) Rosquear tampão.

Tampão