



CONECTOR FÊMEA RETO PARA CRIMPAGEM RG-178

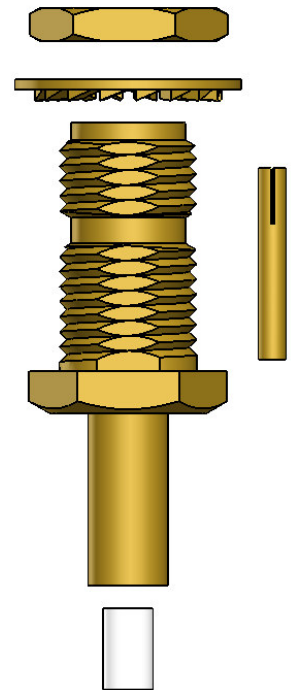
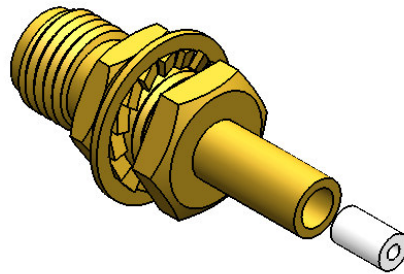
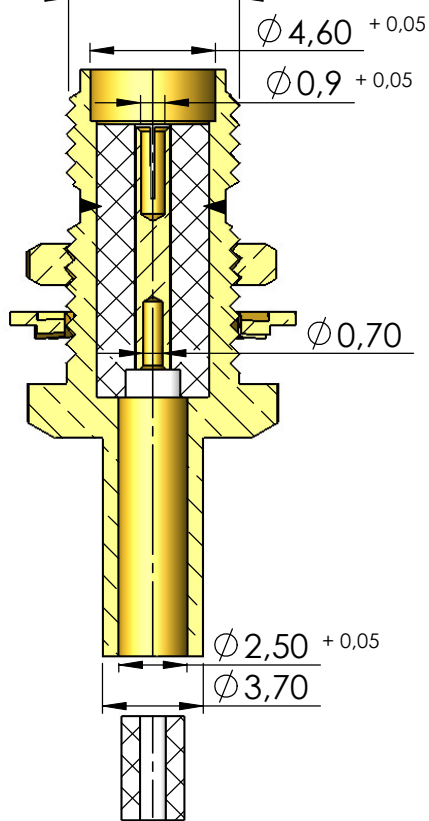
CÓDIGO: 3088

SÉRIE: SMA 50 OHMS

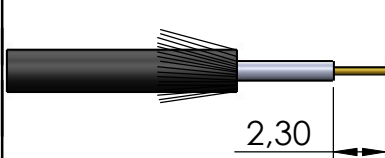
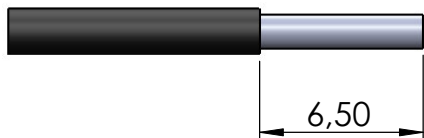
NORMA: IEC 169-15

PESO DO CONECTOR: 3,39g

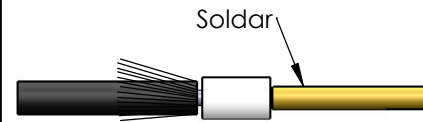
Rosca 1/4" x 36 Fios



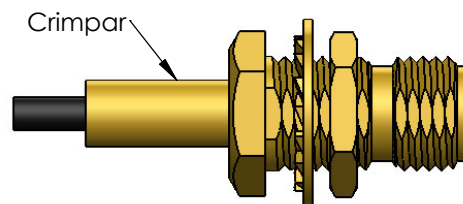
Instruções montagem do cabo no conector



2) Dobrar a malha para trás e cortar o dielétrico expondo o condutor central 2,3mm.



4) Soldar o condutor central no pino.



5) Introduzir o cabo no conector e crimpá-lo.